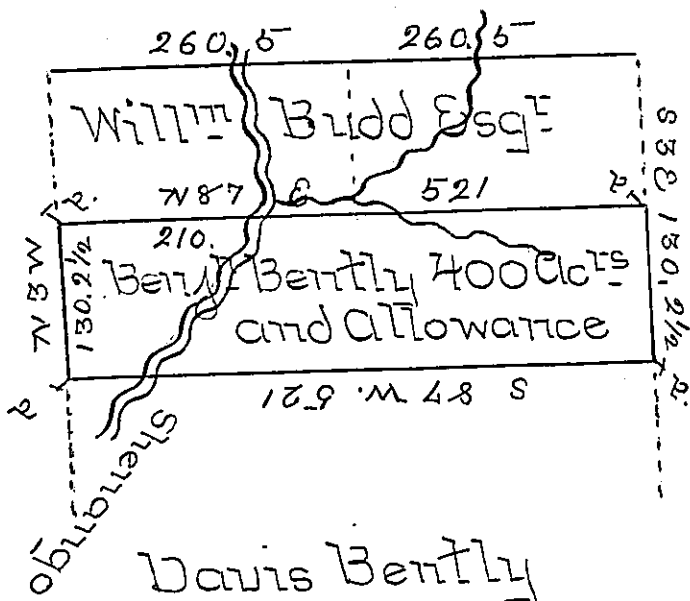


Charles Runo



Situate in Mercer County Sherango Township Containing four hundred Acres and Allowance Surveyed 21th Sept: 1815 in pursuance of a Warrant granted Benj^l Bently the 4th Oct: 1814 - Being part of two tracts of Land Surveyed to Joseph and Patrick Claron on the 14th May 1795 on Warrant granted 21st April 1794

Jos. Asheton U.S.
Mercer County

Note The improvements are 60 Acres under Cultivation Frame House 35 by 25 feet, Grist and Saw-Mill Barn - Orchard &c -

Rich^d Beech Esq^t
Surveyor General
Harrisburgh

IN TESTIMONY that the above is a copy of the original remaining on file in the Department of Internal Affairs of Pennsylvania, made conformably to an Act of Assembly approved the 16th day of February, 1833, I have hereunto set my Hand and caused the Seal of said Department to be affixed at Harrisburg, this SECOND day of JANUARY 1900.

Jameson Pitta
Secretary of Internal Affairs.